

**Medical Marijuana Identification Cards-**  
Riverside County Department of Public Health accepts applications for the Medical Marijuana Identification Card (MMIC).



Appointments for process applications are available in Riverside M, T, W 8 a.m. to 4:30 p.m., and in Palm Springs every 2nd and 4th Thursday. Closed all County holidays. For appointments, call toll free: **1.888.358.7932**

**Nutrition Services/WIC-**

Programs are dedicated to building healthier and physically active communities by providing access to food, community resources, and health and nutrition information, through various programs:

- Women Infants, Children [WIC] (0-5 Years) **1.800.455.4942**
- Loving Support/Breastfeeding Program - 24 hour hotline **1.888.451.2499**
- Community Nutrition Education (schools, retail, etc.)

For additional information call or visit us on the web: [www.rivco-nutrition.org](http://www.rivco-nutrition.org). **1.800.455.4942**

**Office of Industrial Hygiene (OIH)-**

OIH provides grant funded services for the detection and correction of environmental hazards (e.g., asthma triggers, safety hazards and lead-based paint) in the homes of eligible families.

OIH also provides fee-for-service environmental / industrial hygiene consultation to other governmental programs and private businesses in Riverside County. **951.358.5050**

**Public Health Emergency Preparedness & Response (PHEP&R)-**

PHEP&R plans for and responds to all public health emergencies, natural or human-made, including acts of terrorism or "all Hazards".

**951.358.7100**

**Public Health Laboratory-**

The Public Health Laboratory provides accurate, timely, and cost effective laboratory testing to aid in the diagnosis and control of communicable diseases. Bacterial water quality testing is also provided.

**951.358.5070**

**Public Health Nursing-**

Public Health Nurses (PHNs) are RNs who provide community, clinic, and home based health assessments, education, and referrals to people of all ages and their families, with the goals of preventing illness, as well as maintaining and achieving good health. PHNs provide care to high-risk expectant mothers, newborns, children, teens, men, women, and seniors. Public Health Nursing has a number of programs that help improve the health and development of our County residents. These programs are aimed to meet the specific needs of first time mothers, children in foster care, and victims of child and elder abuse. There is no charge for these services.

**951.358.5438**

**Vital Records:**

Vital Records provides certified copies of Riverside County births and deaths, for current and previous year only.

**951.358.5068**

Find out more about the Riverside County Department of Public Health at: [www.rivcoph.org](http://www.rivcoph.org)

Or call us at: **951.358.5000**  
Telecommunication for the Deaf Device (TDD): **951.358.5124**

*Our Goals:*

- 1) Deliver public health and medical services within a responsive and effective system.
- 2) Recruit and retain a qualified workforce.
- 3) Plan, prepare, respond and recover from public health emergencies.
- 4) Plan and implement sustainable livable communities.
- 5) Thoroughly assess and effectively respond to public health needs.



*Public Health Defined...*

[www.rivcoph.org](http://www.rivcoph.org)

Department of Public Health  
Susan D. Harrington, M.S., R.D., Director  
Health Administration Building  
4065 County Circle Drive, Riverside, CA 92503  
**951.358-5000 | FAX 951.358.4529 | TDD 951.358.5124**

**Children's Medical Services:****California Children Services (CCS)-**

CCS is a statewide program providing medical care, equipment, and rehabilitation. Services can be authorized for children and young adults under 21 years of age who have eligible medical conditions and whose families meet certain financial qualifications.  
**951.358.5401**

**Child Health & Disability Prevention (CHDP)-**

Provides comprehensive health check-ups, ages 0-21 years. Providers throughout Riverside County.

**Childhood Lead Poisoning Prevention-**

Provides community education and case follow-up.

**Dental Disease Prevention-**

School based dental education, screening, sealant and fluoride services.  
**951.358.5481**

**Community Outreach:**

Provides an extensive Public Resources referral system; and administers a responsive Volunteer Services Program.  
**951.358.5255**

**Disease Control:**

Disease Control is committed to the protection of public health through early detection, intervention and treatment of communicable and sexually transmitted diseases. The Disease Control Branch provides a variety of services to the individual and the community: preventive care (immunizations, immunization registry, and TB screening); treatment of acute problems (sexually transmitted diseases and tuberculosis); investigations to prevent the spread of certain communicable diseases; and food borne illness outbreaks.  
**951.358.5107**

**Emergency Medical Services (EMS):**

EMS is responsible to plan, implement and evaluate the County Emergency Medical Services system including authority over ambulance services and emergency medical care. EMS Services Include:

- EMS Personnel Credentialing
- Approval and Monitoring of EMS Programs
- Administer Riverside County's Ambulance Ordinance
- Establish and Maintain EMS Policies and Procedures
- Implement and Ensure EMS Quality Improvement Programs and Activities

**951.358.5029**

**Epidemiology & Program Evaluation:**

Epidemiology and Program Evaluation maintains a staff specializing in epidemiology, program evaluation, biostatistics, data management, and GIS analysis to provide health data services for the County.  
**951.358.5557**

**Family Care Centers:**

Provide quality healthcare and clinical services close to where you live regardless of income or ability to pay. The ten health centers provide primary care for the entire family, including preventive, prenatal, and pediatric care.

Medical Nutrition Therapy - see a Registered Dietitian to make health-enhancing lifestyle changes. For more information, please visit our webpage at: [www.rivco-familycarecenters.org](http://www.rivco-familycarecenters.org), or call for appointments at: **1.800.720.9553**

**Family Planning:**

Provides basic contraceptive services for both male and female clients. This includes exams, testing, education, and counseling regarding birth control methods.  
**951.358.6631**

**Health Promotion & Professional Development:**

Our network of programs bridges the gap between knowledge and behavior change to ensure that all county employees and county residents achieve optimum health as measured by the principles of public health and individual health goals.

Programs include:

- Tobacco Control Project
- Childhood Asthma Program
- Tobacco Retail Licensing

**951.358.4977**

**HIV/AIDS Program:**

Services include:

- HIV Testing and Counseling
- HIV Medical Care/Early Intervention Program (EIP)
- Bridge
- Transitional Case Management Program (TCMP)
- Education and Prevention (Outreach)
- Positive Change

**951.358.5307**

**Injury Prevention Services:**

Programs offered include lowcost car seats, car seat safety, pedestrian / bicycle safety, and teen impaired driving. Information on home safety and water and pool safety is also provided.  
**951.358.7171**

**Livable Communities:**

Provides technical assistance to encourage integration of health concerns into community design. Services include: walkable community workshops, safe routes to school trainings, health impact assessments, specific plan reviews, transit integration, pedestrian safety, parks and trails promotion, health elements in general plans, and community presentations.  
**951.358.7171**

**Maternal, Child & Adolescent Health (MCAH):**

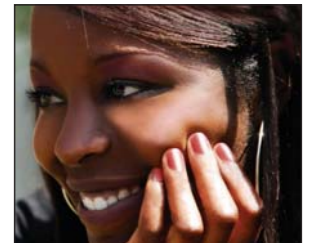
MCAH implements programs designed to improve the health of mothers, children and adolescents. *Programs include:*

**Adolescent Family Services (AFS)-**

AFS provides case management services to pregnant/parenting teens and their children throughout Riverside County.  
**951.358.5192**

**Black Infant Health (BIH)-**

BIH identifies "at-risk" pregnant and parenting African-American women and provides them assistance in using appropriate medical care and other family support services.  
**951.210.1392**

**Comprehensive Perinatal Services Program (CPSP)-**

CPSP staff offer technical assistance and consultation to potential and approved providers in the implementation of CPSP. CPSP offers Medical eligible women comprehensive services, including prenatal care, health education nutrition services and psychosocial support.  
**951.358.5250**

**Perinatal Substance Abuse Screening, Assessment, Referral and Treatment Program (SART)-**

The Perinatal SART Program seeks to address the impact of alcohol, tobacco and drug use during pregnancy and the benefits of early intervention. The Program works with prenatal care providers in implementing substance abuse screening, assessment, and referral as a routine part of prenatal care.  
**951.358.5250**