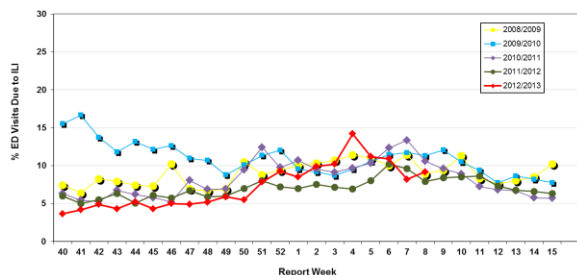


Influenza Season 2012/2013 – Riverside County, California

Influenza Surveillance Weekly Update

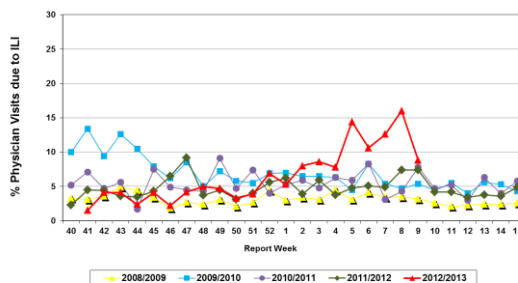
Week ending February 23, 2013

Percent of Emergency Department (ED) Visits due to Influenza-Like Illness (ILI),
Riverside County: 2012/2013 Influenza Season



During week 8, 9.2% of visits to Riverside County emergency departments were related to influenza-like illnesses. Compared to historical data, this is within normal limits.

Percent of Total Visits at Physician Sentinel Sites due to Influenza-like Illness (ILI),
Riverside County: 2012/2013 Influenza Season



During week 8, 8.8% of visits to physician sentinel sites were related to influenza-like illnesses. Compared to historical data, this is above normal limits.

Deaths due to Pneumonia and Influenza: During week 8, 10.3% of deaths were due, in part, to pneumonia or influenza. Compared to historical data, this is within normal limits.

School Absenteeism: During week 8, 10.4% of students at sentinel school sites were absent due to illness. Compared to historical data, this is within normal limits.

State Influenza Activity: During week 7*, overall influenza activity in California remained “widespread”. Laboratory detections of influenza and influenza-associated outbreaks were reported in multiple regions statewide. Based on available data, the percentage of visits for ILI in week 7 (3.9%) fell below the epidemic threshold (4.6%). This was based upon only available data and may change once their remaining providers report. Five influenza-associated deaths in persons less than 65 years of age were reported during week 7. No novel influenza cases have been detected in California to date.

* Data reporting delayed one week.

National Influenza Activity: During week 7*, influenza activity remained elevated in the United States, but decreased in most areas. The proportion of outpatient visits for influenza-like illness (ILI) was 2.8%. This is above the national baseline of 2.2%. All 10 regions reported ILI at or above region-specific baseline levels. Twenty-two states reported widespread influenza activity; Puerto Rico and 21 states reported regional influenza activity; the District of Columbia and 6 states reported local influenza activity; 1 state reported sporadic influenza activity; Guam reported no influenza activity, and the U.S. Virgin Islands did not report. A cumulative rate for the season of 34.2 laboratory-confirmed influenza-associated hospitalizations per 100,000 population was reported. Of reported hospitalizations, more than 50% were among adults 65 years and older. During week 7, 8.6% of all deaths reported through the 122 Cities Mortality Reporting System were due to P&I. This percentage was above the epidemic threshold of 7.5% for week 7. Fourteen influenza-associated pediatric deaths were reported.

* Data reporting delayed one week.

Additional Resources

Riverside County Influenza Information:
State of California Influenza Information:
United States Influenza Information:

<http://www.rivco-diseasecontrol.org/SeasonalInfluenza/>
[http://www.cdph.ca.gov/healthinfo/discond/Pages/Influenza\(Flu\).aspx](http://www.cdph.ca.gov/healthinfo/discond/Pages/Influenza(Flu).aspx)
<http://www.cdc.gov/ncidod/diseases/flu/weekly.htm>

Epidemiology and Program Evaluation
County of Riverside Department of Public Health
<http://www.rivcohealthdata.org>
(951) 358-5557

