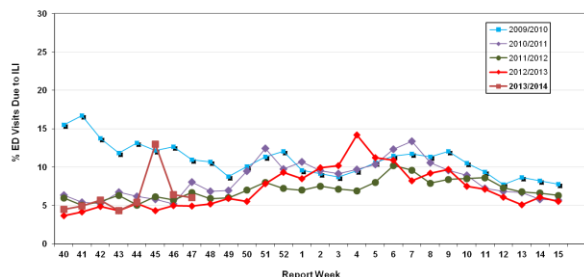


Influenza Season 2012/2013 – Riverside County, California

Influenza Surveillance Weekly Update

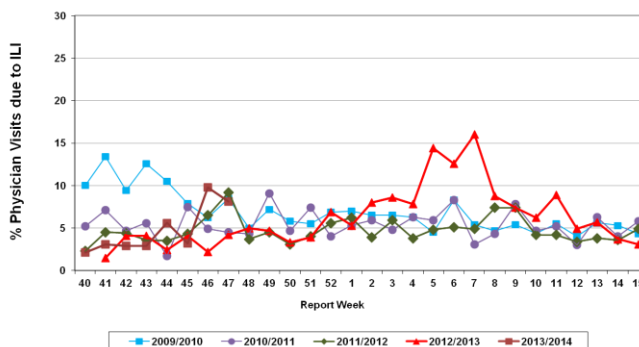
Week ending November 23, 2013

Percent of Emergency Department (ED) Visits due to Influenza-Like Illness (ILI),
Riverside County: 2013/2014 Influenza Season



During week 47, 6.0% of visits to Riverside County emergency departments were related to influenza-like illnesses. Compared to historical data, this is within normal limits.

Percent of Total Visits at Physician Sentinel Sites due to Influenza-like Illness (ILI),
Riverside County: 2013/2014 Influenza Season



During week 47, 8.1% of visits to physician sentinel sites were related to influenza-like illnesses. Compared to historical data, this is above normal limits.

Deaths due to Pneumonia and Influenza: During week 47, 5.3% of deaths were due, in part, to pneumonia or influenza. Compared to historical data, this is within normal limits.

School Absenteeism: During week 47, 8.3 % of students at sentinel school sites were absent due to illness. Compared to historical data, this is within normal limits.

* Data reflective of participating schools

State Influenza Activity: During week 46*, overall influenza activity was “sporadic” in California. Based on available data from 85 out of an average of 122 enrolled sentinel providers, the percentage of visits for ILI in week 46 (1.2%) was below the epidemic threshold (3.5%). No influenza-associated deaths in adults less than 65 years of age were reported during Week 46. No novel influenza cases have been detected in California to date

* Data reporting delayed one week.

National Influenza Activity: During week 46*, influenza increased slightly in the United States. The proportion of outpatient visits for influenza-like illness (ILI) was 1.5%, below the national baseline of 2.0%. One region reported ILI above region-specific baseline levels. One state experienced high ILI activity, two states experienced moderate ILI activity, four states experienced low ILI activity, 43 states and New York City experienced minimal ILI activity and the District of Columbia had insufficient data. The geographic spread of influenza in Puerto Rico and one state was reported as regional; nine states reported local influenza activity; Puerto Rico, Guam and 34 states reported sporadic influenza activity; 3 states reported no influenza activity, and the District of Columbia and the U.S. Virgin Islands did not report. During week 46, 5.8 % of all deaths reported through the 122-Cities Mortality Reporting System were due to P&I. This percentage was below the epidemic threshold of 6.5% for week 46. No influenza-associated pediatric deaths were reported.

* Data reporting delayed one week.

Additional Resources

Riverside County Influenza Information:

State of California Influenza Information:

United States Influenza Information:

<http://www.rivco-diseasecontrol.org/SeasonalInfluenza/>

[http://www.cdph.ca.gov/healthinfo/discond/Pages/Influenza\(Flu\).aspx](http://www.cdph.ca.gov/healthinfo/discond/Pages/Influenza(Flu).aspx)

<http://www.cdc.gov/ncidod/diseases/flu/weekly.htm>

Epidemiology and Program Evaluation
County of Riverside Department of Public Health
<http://www.rivcohealthdata.org>
 (951) 358-5557

