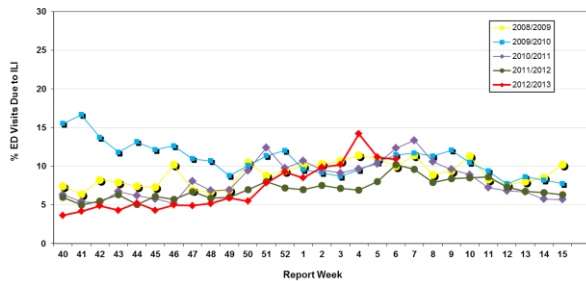


# Influenza Season 2012/2013 – Riverside County, California

## Influenza Surveillance Weekly Update

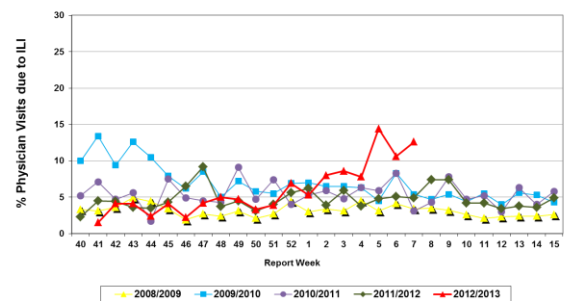
### Week ending February 9, 2013

Percent of Emergency Department (ED) Visits due to Influenza-Like Illness (ILI),  
Riverside County: 2012/2013 Influenza Season



During week 6, 10.9% of visits to Riverside County emergency departments were related to influenza-like illnesses. Compared to historical data, this is within normal limits.

Percent of Total Visits at Physician Sentinel Sites due to Influenza-like Illness (ILI),  
Riverside County: 2012/2013 Influenza Season



During week 6, 12.6% of visits to physician sentinel sites were related to influenza-like illnesses. Compared to historical data, this is above normal limits.

**Deaths due to Pneumonia and Influenza:** During week 6, 11.5% of deaths were due, in part, to pneumonia or influenza. Compared to historical data, this is above normal limits.

**School Absenteeism:** During week 6, 15.8% of students at sentinel school sites were absent due to illness. Compared to historical data, this is above normal limits.

**State Influenza Activity:** During week 5\*, overall influenza activity in California remained “widespread”. Increases in laboratory detections of influenza, and influenza-associated outbreaks were reported in multiple regions statewide. Outpatient influenza-like illness (ILI) decreased in Week 5 (3.6%) compared to Week 4 (4.2%). This was based upon only available data and may change once their remaining providers report. Four influenza-associated deaths in persons less than 65 years of age, including the first pediatric death, were reported during week 5. No novel influenza cases have been detected in California to date.

\* Data reporting delayed one week.

**National Influenza Activity:** During week 5\*, influenza activity remained elevated in the United States, but decreased in most areas. The proportion of outpatient visits for influenza-like illness (ILI) was 3.6%. This is above the national baseline of 2.2%. All 10 regions reported ILI above region-specific baseline levels. Thirty-eight states reported widespread influenza activity; 9 states reported regional influenza activity; the District of Columbia, Puerto Rico and 2 states reported local influenza activity; one state reported sporadic influenza activity; Guam reported no influenza activity, and the U.S. Virgin Islands did not report. A cumulative rate for the season of 29.8 laboratory-confirmed influenza-associated hospitalizations per 100,000 population was reported. Of all hospitalizations, more than 50% were among adults 65 years and older. During week 5, 9.0% of all deaths reported through the 122 Cities Mortality Reporting System were due to P&I. This percentage was above the epidemic threshold of 7.4% for week 5. Fourteen influenza-associated pediatric deaths were reported.

\* Data reporting delayed one week.

**Additional Resources**

Riverside County Influenza Information:  
State of California Influenza Information:  
United States Influenza Information:

<http://www.rivco-diseasecontrol.org/SeasonalInfluenza/>  
[http://www.cdph.ca.gov/healthinfo/discond/Pages/Influenza\(Flu\).aspx](http://www.cdph.ca.gov/healthinfo/discond/Pages/Influenza(Flu).aspx)  
<http://www.cdc.gov/ncidod/diseases/flu/weekly.htm>

**Epidemiology and Program Evaluation**  
**County of Riverside Department of Public Health**  
<http://www.rivcohealthdata.org>  
(951) 358-5557

