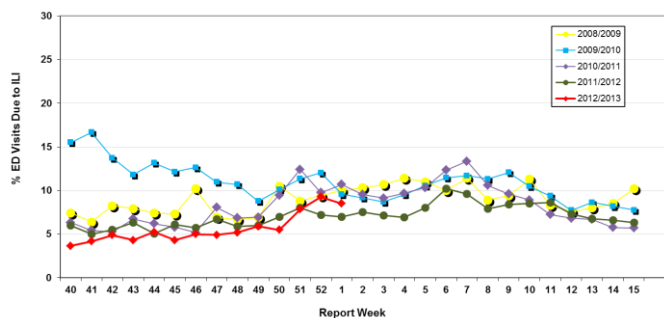


Influenza Season 2012/2013 – Riverside County, California

Influenza Surveillance Weekly Update

Week ending January 5, 2013

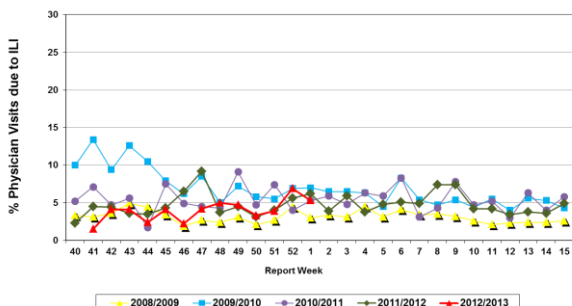
Percent of Emergency Department (ED) Visits
due to Influenza-Like Illness (ILI),
Riverside County: 2012/2013 Influenza Season



During week 1, 8.5% of visits to Riverside County emergency departments were related to influenza-like illnesses. Compared to historical data, this is within normal limits. Activity has increased over the past three weeks but remains within expected limits.

During week 1, 5.3% of visits to physician sentinel sites were related to influenza-like illnesses. Compared to historical data, this is within normal limits.

Percent of Total Visits at Physician Sentinel Sites
due to Influenza-like Illness (ILI),
Riverside County: 2012/2013 Influenza Season



Deaths due to Pneumonia and Influenza: During week 1, 7.5% of deaths were due, in part, to pneumonia or influenza. Compared to historical data, this is within normal limits.

School Absenteeism: During week 51*, 12.9% (only 50% of schools reporting) of students at sentinel school sites were absent due to illness. Compared to historical data, this is above normal limits. * Data not available for weeks 52 and 1 due to holiday closures.

State Influenza Activity: During week 52**, overall influenza activity in California was upgraded to “regional”. Outpatient influenza-like illness (ILI) increased 0.5% in Week 52 (1.8%) compared to Week 51 (1.3%). The California Department of Public Health received one report of a laboratory-confirmed influenza death in a patient under age 65 and no novel influenza cases have been detected in California to date. ** Data reporting delayed one week.

National Influenza Activity: During week 52**, influenza activity increased in the United States. The proportion of outpatient visits for influenza-like illness (ILI) was 5.6%; above the national baseline of 2.2%. Nine of 10 regions reported ILI above region-specific baseline levels. Forty-one states reported widespread geographic influenza activity; 7 states reported regional activity; the District of Columbia reported local activity; 1 state reported sporadic activity; Guam reported no influenza activity, and Puerto Rico, the U.S. Virgin Islands, and 1 state did not report. During week 52, 7.0% of all deaths reported through the 122 Cities Mortality Reporting System were due to P&I. This percentage was below the epidemic threshold of 7.1% for week 52. Two influenza-associated pediatric deaths were reported and were associated with influenza B viruses. ** Data reporting delayed one week.

Additional Resources

Riverside County Influenza Information:
State of California Influenza Information:
United States Influenza Information:

<http://www.rivco-diseasecontrol.org/SeasonalInfluenza/>
[http://www.cdph.ca.gov/healthinfo/discond/Pages/Influenza\(Flu\).asp](http://www.cdph.ca.gov/healthinfo/discond/Pages/Influenza(Flu).asp)
<http://www.cdc.gov/ncidod/diseases/flu/weekly.htm>

