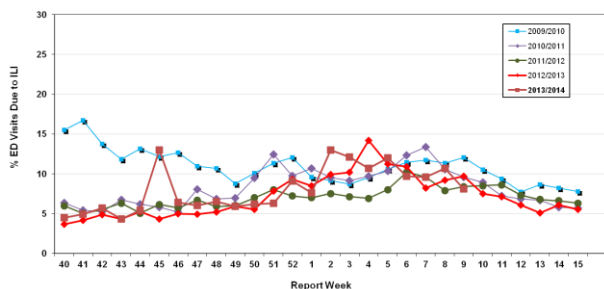


Influenza Season 2013/2014 – Riverside County, California

Influenza Surveillance Weekly Update

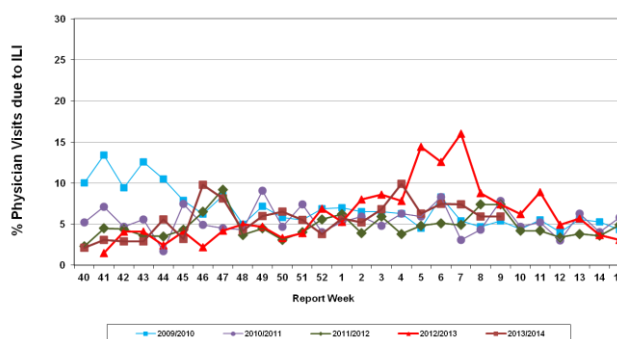
Week ending March 01, 2014

Percent of Emergency Department (ED) Visits due to Influenza-Like Illness (ILI),
Riverside County: 2013/2014 Influenza Season



During week 9, 8.1% of visits to Riverside County emergency departments were related to influenza-like illnesses. Compared to historical data, this is within normal limits.

Percent of Total Visits at Physician Sentinel Sites due to Influenza-like Illness (ILI),
Riverside County: 2013/2014 Influenza Season



During week 9, 5.9% of visits to physician sentinel sites were related to influenza-like illnesses. Compared to historical data, this is within normal limits.

Deaths due to Pneumonia and Influenza: During week 9, 9.7% of deaths were due, in part, to pneumonia or influenza. Compared to historical data, this is within normal limits.

School Absenteeism: No data available

State Influenza Activity: During week 8*, overall influenza activity was “regional” in California. Based on available data from 90 out of an average of 133 enrolled sentinel providers, the percentage of visits for ILI in week 8 (3.7%) was within expected baseline levels for this time of year. Twenty-four influenza-associated deaths in adults less than 65 years of age were reported during Week 8. One influenza outbreaks were reported, no novel influenza cases have been detected in California to date.

* Data reporting delayed one week.

National Influenza Activity: During week 8*, influenza activity decreased, but remained elevated in the United States. The proportion of outpatient visits for influenza-like illness (ILI) was 2.3%, above the national baseline of 2.0%. Eight of 10 regions reported ILI above region-specific baseline levels. Two states experienced high ILI activity, two states experienced moderate ILI activity, 10 states experienced low ILI activity, 36 states and New York city experienced minimal ILI activity; The District of Columbia had insufficient data. The geographic spread of influenza in 10 states was reported as widespread; 22 states reported regional influenza activity; the District of Columbia, Guam and 14 states reported local influenza activity; Puerto Rico and four states reported sporadic influenza activity, and the U.S. Virgin Islands reported no influenza activity. During week 8, 7.6% of all deaths reported through the 122-Cities Mortality Reporting System were due to P&I. This percentage was above the epidemic threshold of 7.4 % for week 8. Nine influenza-associated pediatric deaths were reported.

* Data reporting delayed one week.

Additional Resources

Riverside County Influenza Information:
State of California Influenza Information:
United States Influenza Information:

<http://www.rivco-diseasecontrol.org/Services/Influenzainformation.aspx>
[http://www.cdph.ca.gov/healthinfo/discond/Pages/Influenza\(Flu\).aspx](http://www.cdph.ca.gov/healthinfo/discond/Pages/Influenza(Flu).aspx)
<http://www.cdc.gov/ncidod/diseases/flu/weekly.htm>

Epidemiology and Program Evaluation
County of Riverside Department of Public Health
<http://www.rivcohealthdata.org>
(951) 358-5557

