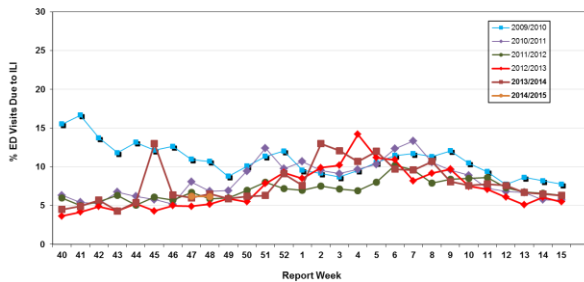


Influenza Season 2014/2015 – Riverside County, California

Influenza Surveillance Weekly Update

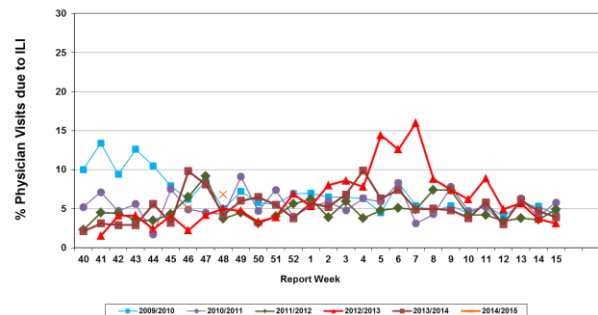
Week ending November 29, 2014

Percent of Emergency Department (ED) Visits due to Influenza-Like Illness (ILI), Riverside County: 2014/2015 Influenza Season



During week 48, 6.2% of visits to Riverside County emergency departments were related to influenza-like illnesses. Compared to historical data, this is within normal limits.

Percent of Total Visits at Physician Sentinel Sites due to Influenza-like Illness (ILI), Riverside County: 2014/2015 Influenza Season



During week 48, 6.8% of visits to physician sentinel sites were related to influenza-like illnesses. Compared to historical data, this is above normal limits.

Deaths due to Pneumonia and Influenza: During week 48, 2.6% of deaths were due, in part, to pneumonia or influenza. Compared to historical data, this is below normal limits.

School Absenteeism: During week 47*, 8.2% of students at sentinel school sites were absent due to illness. Compared to historical data, this is within normal limits.

State Influenza Activity: During week 48, overall influenza activity was “sporadic” in California. Based on available data from 104 enrolled sentinel providers, the percentage of visits for ILI in week 48 (2.5%) was within expected baseline levels for this time of year. No influenza-associated deaths in adults less than 65 years of age were reported during Week 48. No influenza outbreaks were reported.

National Influenza Activity: During week 48, influenza activity increased in the United States. The proportion of outpatient visits for influenza-like illness (ILI) was 2.6%, which is above the national baseline of 2.0%. Eight of 10 regions reported ILI at or above region-specific baseline levels. Puerto Rico and six states experienced high ILI activity; one state experienced moderate ILI activity; five states experienced low ILI activity; New York City and 38 states experienced minimal ILI activity; and the District of Columbia had insufficient data. The geographic spread of influenza in Puerto Rico and six states was reported as widespread; 14 states reported regional activity; the U.S. Virgin Islands and 19 states reported local activity; the District of Columbia and 11 states reported sporadic activity; and Guam did not report. During week 48, 5.4 % of all deaths reported through the 122-Cities Mortality Reporting System were due to P&I. This percentage was below the epidemic threshold of 6.5% for week 48. No influenza-associated pediatric deaths were reported.

* Data reporting delayed one week
 ** Data reporting delayed two weeks

Additional Resources

Riverside County Influenza Information:
 State of California Influenza Information:
 United States Influenza Information:

<http://www.rivco-diseasecontrol.org/Services/InfluenzaInformation.aspx>
[http://www.cdph.ca.gov/healthinfo/discond/Pages/Influenza\(Flu\).aspx](http://www.cdph.ca.gov/healthinfo/discond/Pages/Influenza(Flu).aspx)
<http://www.cdc.gov/ncidod/diseases/flu/weekly.htm>

